



# USA ATSX500

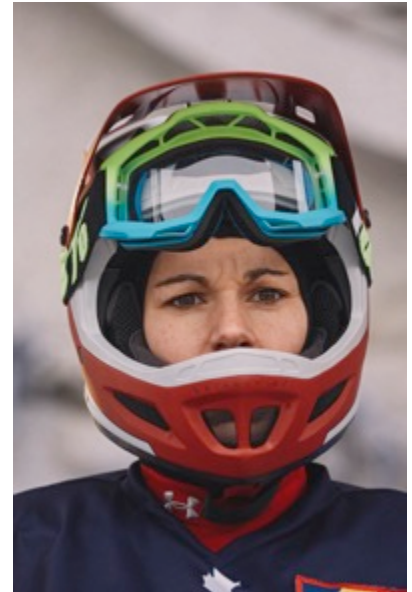
January 16-18, 2020  
Mont du Lac Resort  
Superior, Wisconsin



## ATHLETE WELCOME LETTER



The US Ice Cross Association (USIX) is excited to host the United States 2020 ATSX500! We will be racing at Mont du Lac Resort in Superior, Wisconsin – about 2 ½ hours from the MSP International Airport.



## SCHEDULE

### Thursday, January 16

1-4PM Registration open to all **\*highly recommended, bring jersey\***

### Friday, January 17

8AM Registration open to all

**8AM Riders Briefing (Men only)**

9AM Men's practice runs & time trials

**10AM Riders Briefing (Juniors and Women only)**

11AM Junior's and Women's practice runs & time trials

### Saturday, January 18

8AM Riders Briefing

**9AM Open training 9-10:30**

1PM Riders Briefing (Main Event athletes only)

**2PM ATSX500 Main Event**

10PM AFTER PARTY @ Ace's on First

## OFFICIAL USIX AFTER PARTY

Athletes, friends & family 21+ are invited to help celebrate a great race weekend immediately following the race in the hill chalet! The official after party will start at 10pm at Aces on First in Duluth!



USicecross



@USicecross



@USicecross



## REGISTRATION/ACCREDITATION

**Please bring a valid photo ID AND YOUR JERSEY**

**\*Anyone under 20 must bring a parent/guardian to fill out waivers**

### THURSDAY OPEN REGISTRATION

**\*We encourage as many athletes to register during this time\***

THURSDAY 1-4PM Mont du Lac Resort

### FRIDAY BEFORE QUALIFIER

FRIDAY 8-8:45AM Mont du Lac Resort

## PLEASE BRING YOUR OWN SKATEGUARDS!

**\*Hill will have an area to leave your bags, but will not be guarded by security.**

We will *not* have skate sharpening on site, but you can find sharpening here:  
Stewart's Bike & Sports

102 S 29<sup>th</sup> Ave W

Duluth, MN 55806

[www.stewartsduluth.com](http://www.stewartsduluth.com)



USicecross



@USicecross



@USicecross





## AIRPORT

The largest airport is the **Minneapolis-St. Paul International Airport (MSP)**

- MSP is 157 miles (2hr 20min) from preferred hotel Duluth Radisson
- MSP is 141 miles (2hr 10min) from Mont du Lac Resort

The closest airport is the **Duluth International Airport (DLH)**

- DLH is 6 miles (15min) from preferred hotel Duluth Radisson
- DLH is 18 miles (30min) from Mont du Lac Resort



## PREFERRED LODGING

Radisson Duluth - Harborview

505 W Superior St  
Duluth, MN 55802

Call toll-free 1 (800)333-3333

OR

Visit [www.radisson.com/duluthmn](http://www.radisson.com/duluthmn)

USE CODE: **CRASH1**

## TRANSPORTATION

We will have limited shuttles available between the hotel and Mont du Lac.

### THURSDAY

12 & 12:15 pickup at hotel

### FRIDAY

7:15 & 7:30am pickup at hotel

### SATURDAY

7:15 & 7:30am pickup at hotel

12 & 12:15pm pickup at hotel

Return rides will be based on when time trials & events are complete!



USicecross



@USicecross



@USicecross



### NEARBY FOOD/RESTAURANTS

**Duluth Grill** – 118 S 27<sup>th</sup> Ave W, Duluth, MN 55806

**Pizza Luce (free delivery!)** – 11 E Superior St #100, Duluth, MN 55802

**Canal Park Brewery** – 300 Canal Park Dr, Duluth, MN 55802

**Little Angie's Cantina** – 11 Buchanan St, Duluth, MN 55802

**Grandma's Saloon & Grill** – 522 S Lake Ave, Duluth, MN 55802

**310 Pub** – 310 S Lake Ave, Duluth, MN 55802

**Caddy Shack Indoor Golf & Pub** – 2023 W Superior St, Duluth, MN 55806

### LOCAL ATTRACTIONS

Great Lakes Aquarium

353 Harbor Dr, Duluth, MN 55802

Adventure Zone

329 Lake Ave S, Duluth, MN 55802

Bent Paddle Brewing Co. Taproom

1832 W Michigan St, Duluth, MN 55806



USicecross



@USicecross



@USicecross



\*\*Please note this is an outdoor event where weather conditions can be unpredictable. In the event a race cannot be held, no refunds will be provided.

## QUESTIONS?

Email [usicecross@gmail.com](mailto:usicecross@gmail.com)

# ATSX



## ***TITAN*** ***RENTALS***



## ***TITAN*** ***MACHINERY***

# RANGER

RANGER CHEVROLET  
BUICK GMC



# Radisson

DULUTH  
HARBORVIEW

## Security Jewelers

*The Area's Leading Jeweler®*



USicecross



@USicecross



@USicecross